



A Lifestyle
Beyond Excellence





Happiness is
Your Dream Home
Blissfully
Open Spaces in Nature

We take immense pleasure in introducing ourselves as **Shree Radhe Shyam** a luxurious 2 & 3 BHK Flats and Prime commercial space.

We have built space that provide facilities and advantages in line with you ambitions. It is located on the Sevasi-Bhayli Road Vadodara.

It have everything you need, to ensure a comfortable living. From school to office, to shopping arcades to leisure outlet. All well-connected with a network of road.





Thoughtful Amenities For Your Lifestyle

S H R E E R A D H E S H Y A M

- ◆ Entrance gate with security cabin
- ◆ Clubhouse
- ◆ Beautiful landscaped garden
- ◆ Children Play Area
- ◆ 5 Passenger Lift with Power Backup
- ◆ 24 Hours Power Back-up in common area
- ◆ 24 hours water supply
- ◆ CCTV Camera in common Area
- ◆ Safe and Secure Intercom Security System
- ◆ Separate Borewell for Each Tower with Water Softener Plant



The desire to live
beyond ordinary...

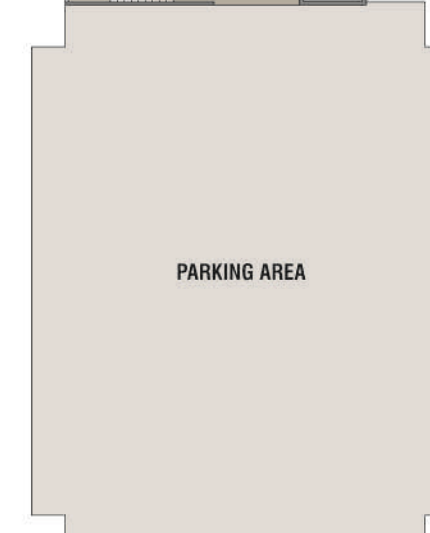
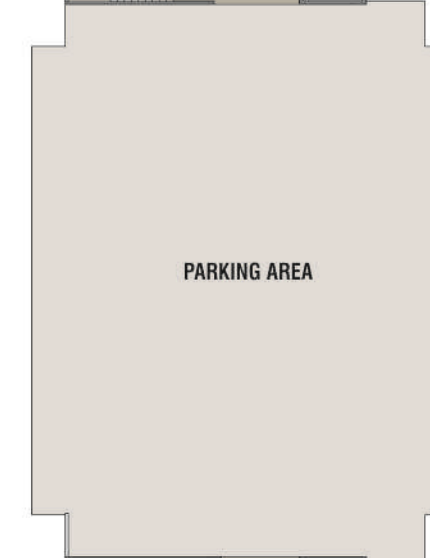
Step in to a words sound of enchanting waterfall will bring you close to the nature, not to forget convenience of urban world like drop-off zones for your kids and car porch for you to give you best of the words.

12 MTR. WIDE ROAD

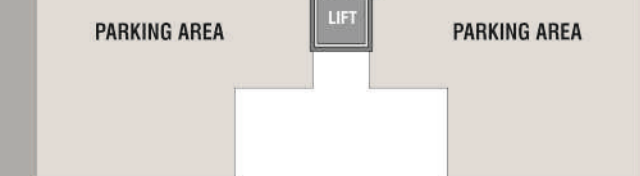
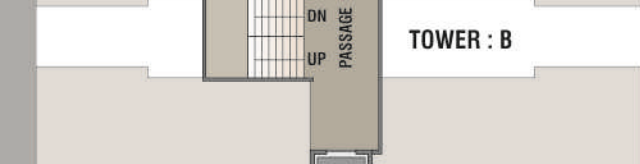
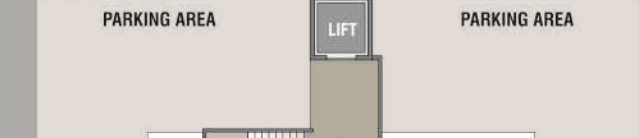
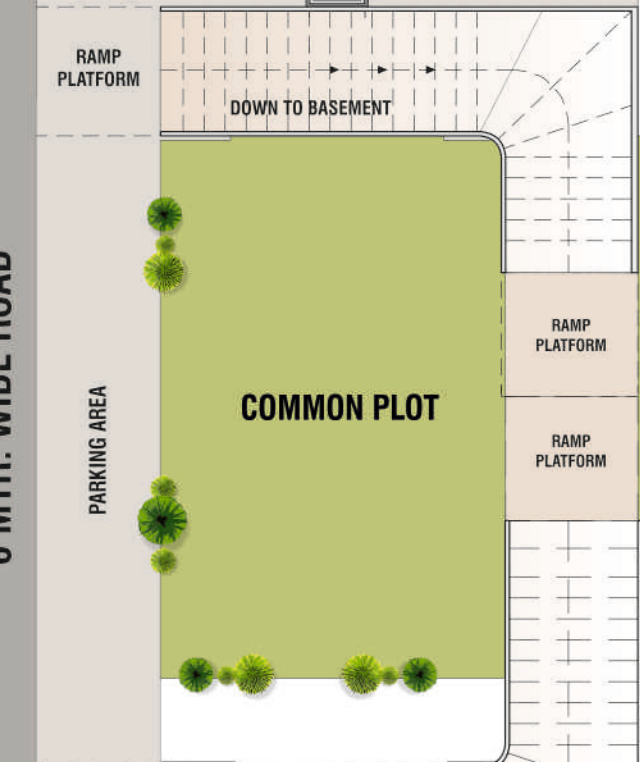
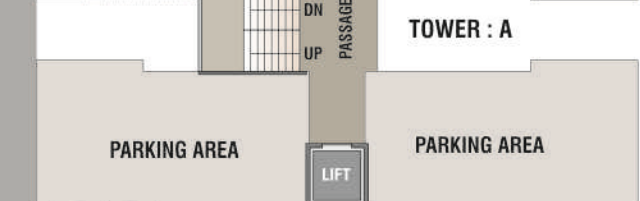
12 MTR. WIDE ROAD



BASEMENT FLOOR PLAN



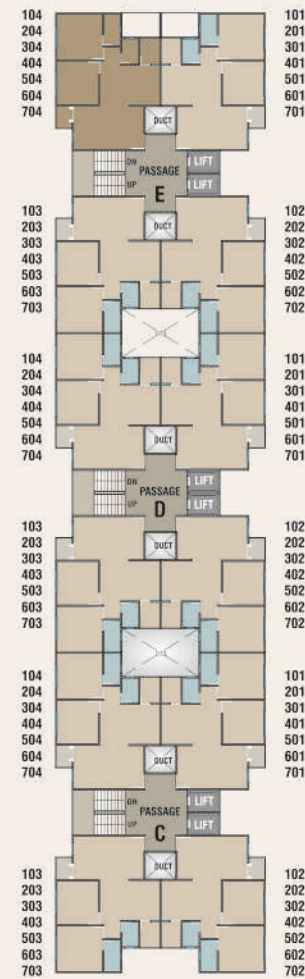
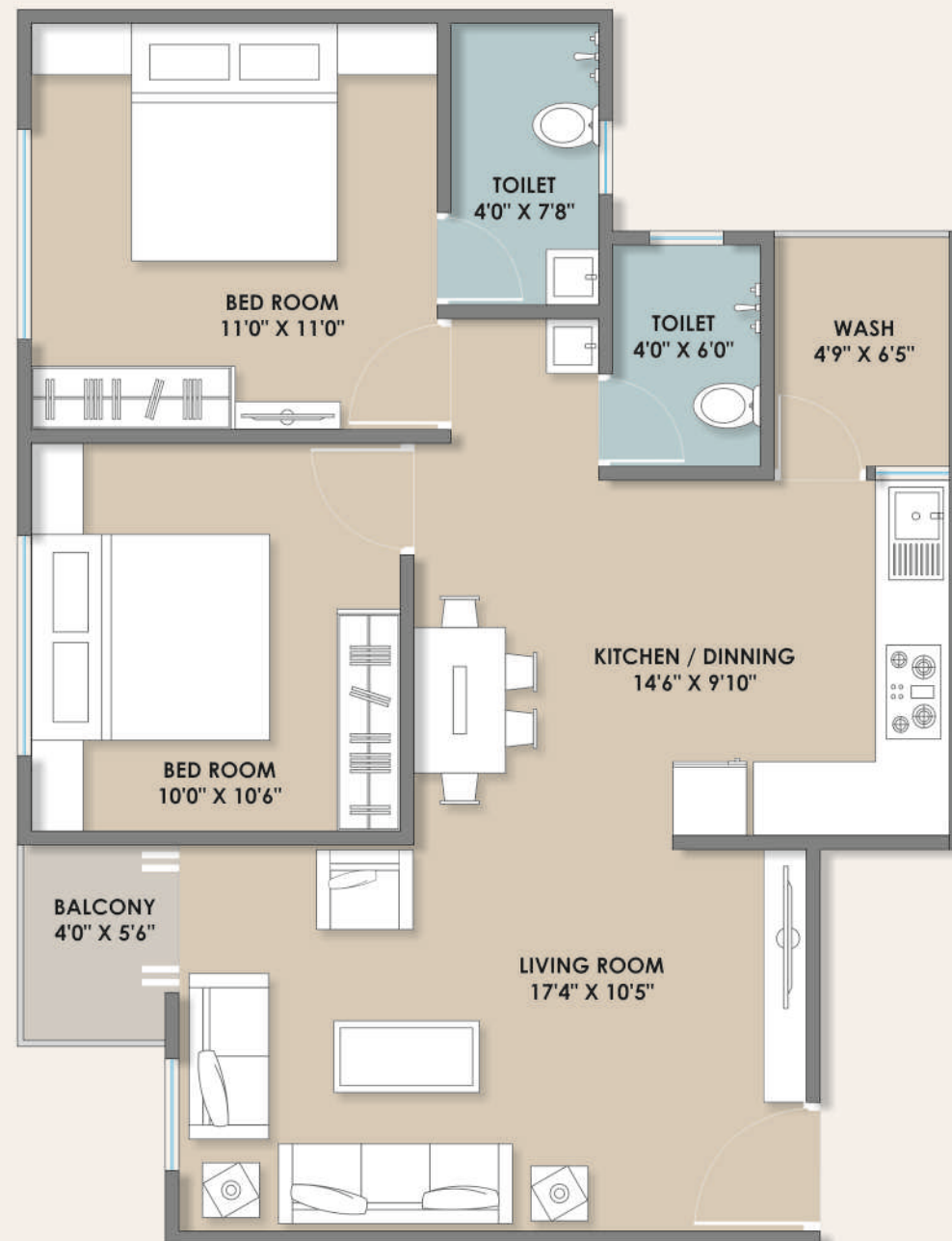
GROUND FLOOR PLAN



TOWER : C, D & E

TYPICAL FLOOR PLAN 1st To 7th

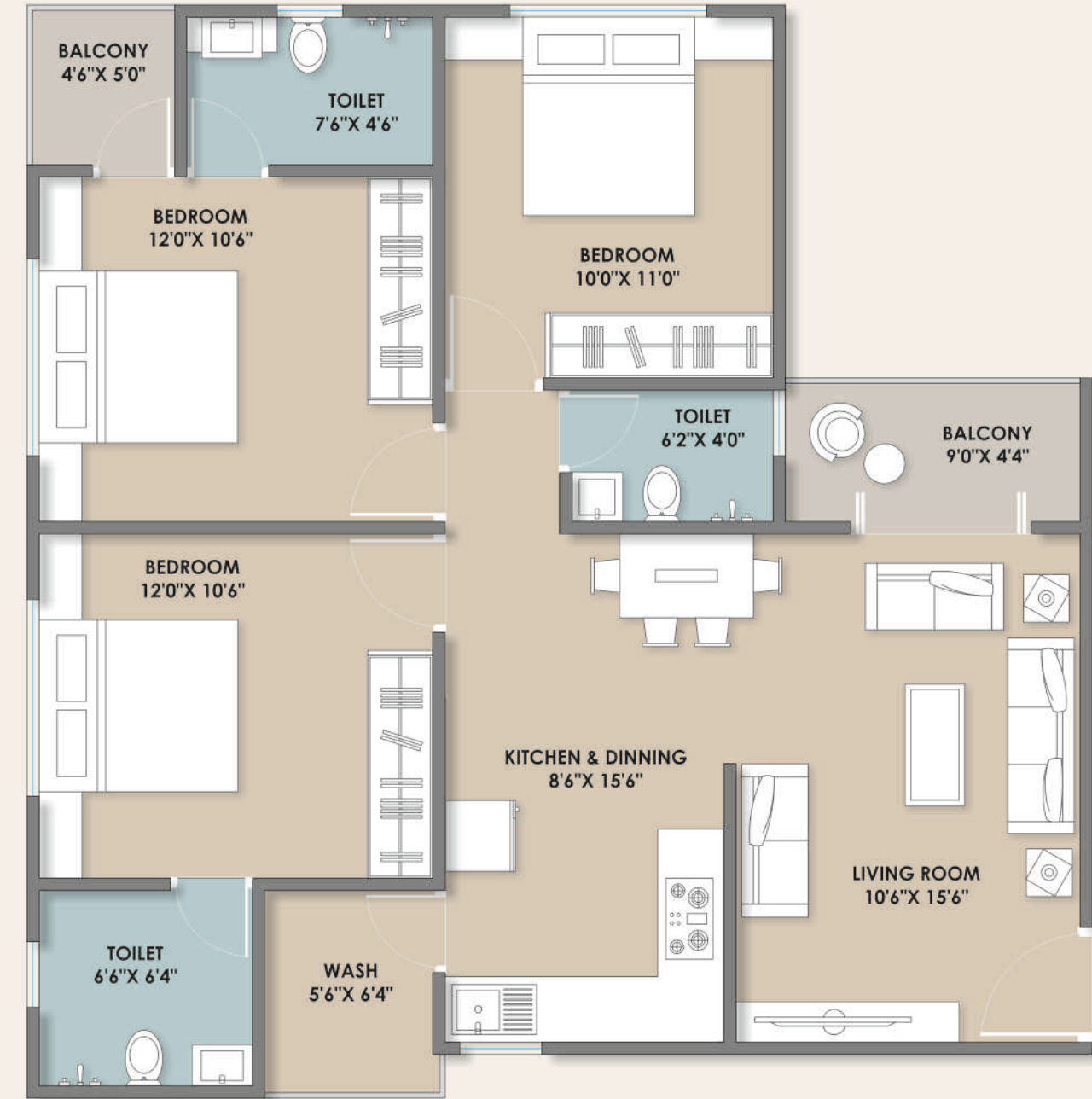
2 BHK



TOWER : A & B

TYPICAL FLOOR PLAN 1st To 7th

3 BHK





TYPICAL 1st To 7th FLOOR LAYOUT PLAN





Elegant & Delightful...
lifestyle living at its best!

Specification

- ◆ 24"X24" Vitrified Tiles Flooring
- ◆ Decorative Main Door & Internal both side laminated Flush Doors
- ◆ Systematic Wall Concealed CPVC Plumbing, Good Quality Fitting & Tiles Dado up to Slab Level
- ◆ Provision for Electric Geyser in Bathroom

S H R E E R A D H E S H Y A M

- ◆ Abundant Electric Point with Semi Modular Switches
- ◆ R.O. Water System in Kitchen
- ◆ Color Anodized Aluminium Windows
- ◆ Granite Platform with C.P. Fitting & S.S. Sink in Kitchen
- ◆ Internal Walls Will be Finished
- ◆ External Walls Will be Finished with Weather Proof Acrylic Paints



Developers :
Shree Radhe Infra

Site : 'Shree Radhe Shyam'
Opp. Prathna Vihar Flats, Near Samay Party Plot,
Sevasi, T.P.-2, Vadodara, Gujarat, (INDIA).

Contacts : +91 99250 49544

E-mail : sandipsheth73@gmail.com

RERA Reg. No.: PR/GJ/VADODARA/VADODARA/Others/ MAA09471/141221
Website: gujrera.gujarat.gov.in

Architect: Ruchir Sheth



Structural Consultant:
Zarna Associates



Disclaimer : All plan are subject to amendments and approval by the relevant authorities. All photography and computer imagery are artist's impression and are provided for illustrative and indicative purposes only. While every reasonable care has been taken in providing this information, the developers cannot be held responsible for any inaccuracy. Subjects to Vadodara Jurisdiction.